

Next Steps to put People at the Heart of Care

A plan for Adult Social Care
System reform 2023 to 2024 and
2024 to 2025 (April 23) Briefing

[Next steps to put People at the Heart of Care - GOV.UK
\(www.gov.uk\)](https://www.gov.uk)



Overview – this plan

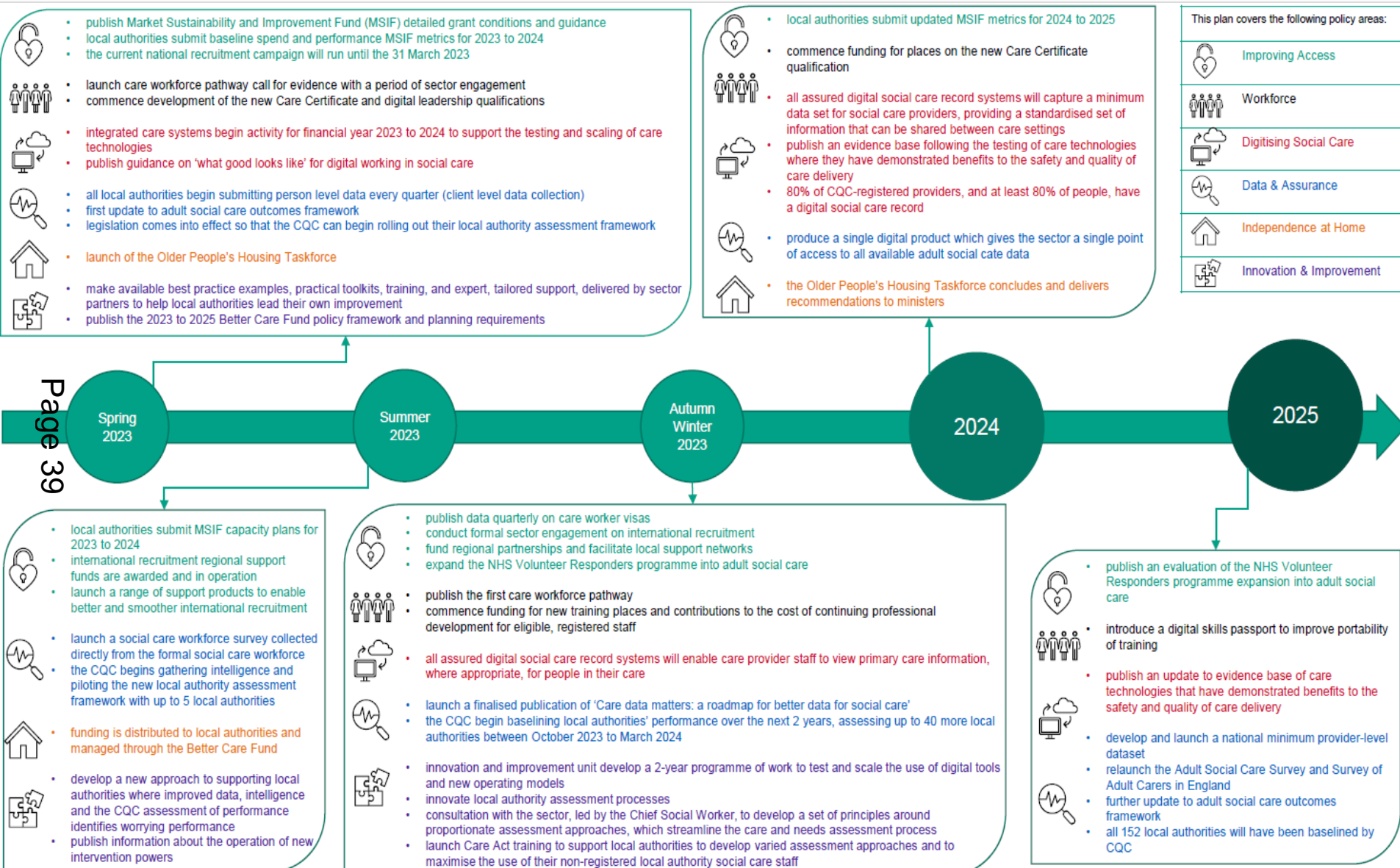
- Builds on the White Paper published in December 2021 which set out a 10-year vision for adult social care and revolves around 3 objectives:

- **People have choice, control and support to live independent lives.**
- **People can access outstanding quality and tailored care and support**
- **People find adult social care fair and accessible**

- Sets out how the Government is building on progress over the last year by implementing the most impactful proposals and sets out new commitments

Page 38

Key Milestones – Timeline



Improving access to care and support

- **Making sure people have access to the right care, in the right place, at the right time**
- **Investing over the next 2 years to:**
 - **Supporting local capacity planning through new funding**
 - **Supporting employers to recruit and retain the staff they need**
 - **Supporting volunteers and the people who work with them**

Recognising skills for careers in care

The adult social care workforce is one of our greatest assets yet there are long standing challenges in recruiting and retaining a workforce of the right size with the right skills.

- Over the next 2 years, at least £250m will be invested to:

- Recognising adult social care as a profession

Supporting career progression and development

- Building support and communication networks for people working in care
- Reform evaluation

Digital Transformation in adult social care

It is recognised that not all people will want to use technology as part of their care, but it is important that care teams have the right digital tools and data to enhance the quality of care provided.

Progress has been made with nearly £50m spent to support digitization and ensure good data protection and cyber security practices. Uptake of digital social care records has increased and an assured supplier list that supports providers to invest in a digital record solution that is complaint has been developed.

Page 42

Over the next 2 years over £100m will be invested to:

- **Driving rapid adoption of digital social care records (DSCRs)**
- **Testing, evaluating and scaling care technologies**
- **Improving digital skills**
- **Connectivity infrastructure and cyber security upgrades**

Personalising care through stronger data and local authority assurance

As the white paper set out, the Government do not have sufficient data and information on how well care and support is delivering good outcomes and promoting wellbeing. The roadmap for delivering data transformation is set out in Care Data Matters, published in draft.

The CQC will independently review and assess how well LAs deliver their social care responsibilities.

Discharge metrics will be included in the wider set of metrics that the Office for Local Government will publish in 2023.

Page 43

Over the next 2 years, up to £50m will be invested to:

- Streamline and improve data collection
- Establish new data collection and bridge data gaps
- Improve access to data and produce better insights from this data
- Introduce CQC assessment of local authority delivery of their adult social care responsibilities, which will roll out from April 2023

Supporting people to remain independent at home

The White paper set the Government's Ambition for local places to join up housing, health and care services. This included providing more choice in local communities and increasing the supply of specialist supported housing.

Services that provide the right adaptations, or fix the small issues around the home, have a crucial role in supporting older and disabled people to maintain their independent at home.

Over the next 2 years, an additional £102m of investment to:

- Increase the level of housing adaptation support available in local areas
- Launching a new independently chaired Older People's Housing Taskforce

- **A home set up to meet your needs**
- **Older People's Housing Taskforce**
- **Building the Right Support Delivery Board**

Driving Innovation and improvement

The Government recognise the ongoing importance of improvement to the adult social care sector in the context of reform, including the introduction of the CQC's assessment of local authorities

- Continuing to fund improvement activity to ensure that the sector is supported to deliver the best possible care.
- Establishing a new social care innovation and improvement unit to develop and define clear priorities with our partners.
- Support LAs to have the capacity and support to trail, adopt and scale new approaches to delivering care.
- Supporting LAs to deliver outcomes-based commissioning is key and committed to strengthening commissioning capabilities

Over the next 2 years, at least £35m invested to:

- Support local systems to trail and scale innovative approaches to transform the quality of care
- Innovate and improve local authority strengths-based assessments and engagement with people and their carers
- Work with sector partners and cross government to understand operational challenges and regional variations to direct support to where it is most needed

Joining up services to support people and carers

Care is best when it is centred on the person's needs, and an integrated response to those needs across different services supports the person to have the best possible life.

Set out opportunities to progress even further with joining up health and social care at a local level in the joining up care for people, place and populations white paper.

The white paper recognised the need for health, social care and other services, such as housing, homelessness and community support to be joined-up to provide a seamless care experience of person-led support. The Government will continue to work with local areas to embed housing in broader health and care strategies.

Providing targeted support and funding to local areas to improve outcomes which includes funding for specific training for local leaders.

Over the next 2 years, up to £35m is being invested to:

- Target support to local areas through the Better Care Fund support programme
- Better understand the impact of integrated support for unpaid carers
- Build leadership skills to support better integration of services